



transformation platform™

Enterprise Architecture teams typically fail because they don't do three critical things: deliver service and value to the business; provide incisive and real-time information to support the right people at the right time; nor do they adjust rapidly to support urgent and critical CIO priorities.

Now in its eighth version, the Trouw Transformation Platform has been designed and developed with some of the world's largest and most successful EA teams, who have taken EA and strategic IT planning to the next level within their organizations. They not only demand a platform that is business-driven and agile enough to respond to whatever is thrown at them, they also require innovation and best-in-class technologies. They insist on Trouw.

the challenge

Not business driven: Successful Enterprise Architecture integrates IT to the business, providing full visibility into the complex web of IT people, processes, hardware and projects along with Enterprise Business Architecture and strategy. The problem is that most EA teams are too IT-centric so they are slow to respond when asked to capture business architecture and strategy. If they don't have relevant or updated IT information at hand or it lacks business context, you end up with business information presented in modeling diagrams. The result: No business credibility for the EA team, little support for the CIO's business discussions and tough questions to answer on the value of EA.

Poor data management, enterprise visibility and socialization: True EA and strategic decision-making means getting correct and current information to the right stakeholder at the right time. This includes storing and delivering the current state and strategy of all IT and business aspects. Without the right technology, it is even more difficult to automate, validate and update data from numerous sources, both human and digital. Lightweight or fragmented approaches are not sustainable, and may even deliver misleading information. Furthermore, the technology has to be flexible and adaptable to your process and governance mechanisms. Even if you can get the right information pulled together and updated, you still need to figure out how to deliver it in real time and in a useful format. Different stakeholders require interfaces that work from the same data source – ranging from rich modeling tools for architects to Web-based decision support tools for executives. The data management, visibility and socialization problem boils down to millions of data items, from thousands of different formats, delivered to thousands of unique stakeholders in a million different configurations.

No way to configure and extend to suit enterprise requirements: Gone are the days when Excel, Visio and PowerPoint, Frankenstein-like extensions to modeling tools or hard-coded IT management applications could do a job for EA and strategic IT planning. Many argue that they never could. Today's platforms must fit into the requirements of compliance-driven corporation, with adequate identity management, security, information partitioning, scalability and open-platform support. They must be configurable internally or by partners to support roles, processes and data sources that are unique to the business, or are yet to be imagined. If your planning platform can't respond to business changes, how can your EA or IT team do so?

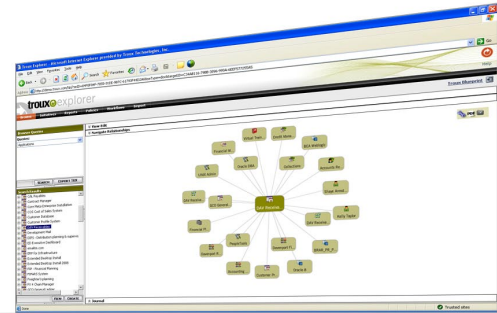
the solution

When it comes to EA management and strategic IT planning, The Troux Transformation Platform is agile, business driven and best-in-class in every aspect.

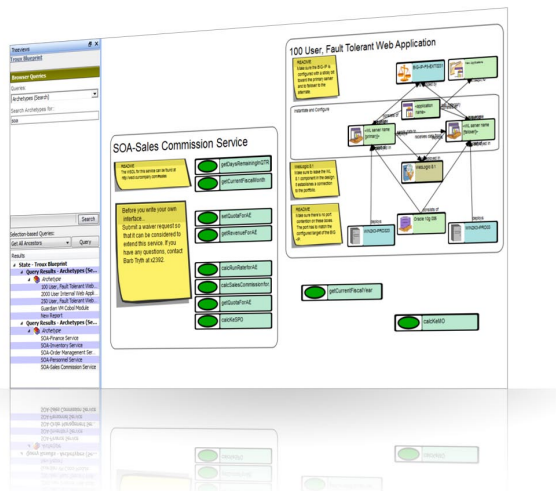
platform benefits

Delivering all the information capabilities required to quickly understand the IT-business relationship and answer key business questions, the Troux Transformation Platform, defines state-of-the-art with a best-in-class solution in each critical capability:

- **Sophisticated data management** - Only Troux manages the full data-management lifecycle, including automated collection from multiple digital sources (CMDB, PPM, modeling tools, ERP systems, etc.) and human surveys with e-mail management and Web-based interfaces. Advanced relationship mapping, integrity checking, validation and authorization ensure that information is correct and up-to-date. Collection, a key component of the Troux Transformation Platform, is easy to set up with Troux even providing reference content so you can get started immediately. What's more, Troux's data management is open and scalable so new collectors can be easily scripted to exchange information with any source. At the heart of our data management architecture is the industry's most scalable, adaptable and secure repository. It regularly handles millions of data items and the thousands of relationships that connect them.
- **Visibility and deep analytics** - Only the Troux Transformation Platform embeds analytics from the world's most powerful and industry standard business intelligence engine. It includes a comprehensive data mart capability common to all Troux applications, and is fully integrated with a wealth of report outputs (MS Office, PDF, HTML, XML, etc.) and online visualizations (including the latest Flex technology) with multiple drill-down capabilities. Only with Troux can you create reports and visualizations of the data architecture, ensuring that users are insulated from underlying changes.



Troux handles the millions of data items and the thousands of relationships that connect them – but makes it easy to visualize relationships to unravel the complexity



Breakthrough Archetypes speed up projects while improving quality

You can package all reports and visualizations into a portal for each stakeholder, so they can instantly navigate and drill into the information that is more pertinent and accessible to them.

- **Architecture governance, management and modeling** - With 20 years experience in modeling interfaces and meta-modeling from our Metis™ heritage, the Troux Transformation Platform allows Troux Architect client to adapt to their preferred notation or templates. Architecture sharing, comparison, notation, governance are all supported right out of the box as Troux Architect is tightly integrated into the platform. Now enabled for Troux's breakthrough Archetypes, Solution and Enterprise Architects can work together seamlessly to design, reuse and extend enterprise patterns.

Benefits cont'd.

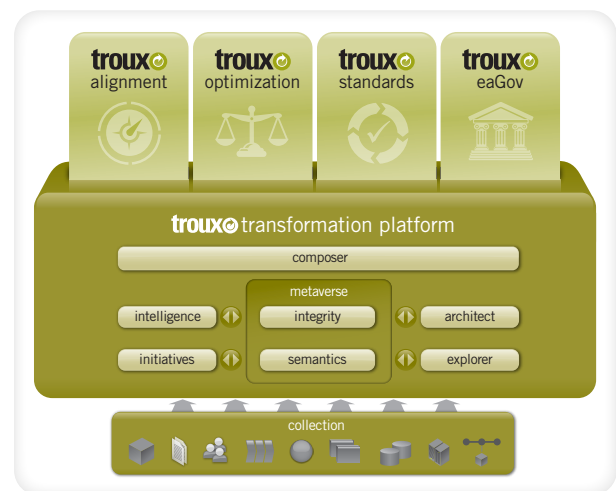
The platform also delivers incredibly rich Semantics meta-model with more than 200 objects and 1000 relationships right out of the box. You can rest assured that it's fully configurable since Semantics is from Trough and the extensions you make won't interfere with core operations.

The repository can also store information related to multiple future state scenarios. The beauty of the Trough architecture means that you can use all of your reports and visualizations to instantly see what things look like if you 'turn the clock forward' or 'view parallel scenarios'.

- **Enterprise stakeholder management** - Trough comes with out-of-the box role support for many different roles within your organization—from business users to architects, portfolio planners to standards planners. Each user has their own log-in (extensible to your identity management system) and security profile. Trough's unique realms technology means that you can determine specifically who can see what data. After all, some plans and scenarios may well contain highly sensitive data.
- **Configuration and extension** - Only Trough ships with the unique Composer technology that enables customer Web portals and views to be quickly configured to support any new role, governance process, decision support requirement, executive dashboards – in fact any solution that can tap into the rich information and capabilities of the platform. In fact, we build all of our applications (Trough Optimization, Trough Standards, Trough Alignment and Trough eaGov) on this platform which not only means that they are fully configurable, but they work together seamlessly with each other and your own solutions and views. The platform ships with many ready-to-use elements, or you can import your own.

The most innovative technology – seamlessly integrated

Trough has a reputation for innovation. With five patents pending, the Trough Transformation Platform is packed with technology that is all seamlessly integrated to automate your EA and planning processes. Trough Architect is our renowned modeling client that works directly with the Metaverse repository with its new Realms-based security, Semantics meta-model, and Initiatives managing multiple scenarios and future states. Collection is our data management engine that works with our Integrity human information collection capability. Intelligence is our deep analytics engine that is now enhanced with Flash and Flex-developed visualizations. Composer pulls it all together into configurable, easy-to-use role-based user interfaces.



Trough 8 suite of business applications all leveraging power and business intelligence from the Trough Transformation Platform

Introducing Archetypes

New to Trough 8 are Archetypes, the first ever patterns-based design system for creating and managing reusable IT building blocks. These are basically pre-defined object groupings and relationships that are prescribed to be used for a specific need. For example, an Archetype would be a prescribed pattern for implementation of a "100 User Fault Tolerant Web Application." This would include reference to the approved server, operating system, database, network, application server and skills required to get the Web Application up and running very quickly. Archetype technology is seamlessly integrated into Trough Architect and Metaverse and used heavily in Trough Standards for enabling accelerated estimating and standard design reuse.

the benefits

The flexible, enterprise-scalable Troux Transformation Platform supports the Troux application suite to help global enterprises and governments:

Reduce Costs

- Rationalize IT systems and applications
- Streamline IT planning cycles
- Manage IT applications' lifecycles
- Align IT spending with business priorities

Minimize Risks

- Ensure decisions are based on high quality, timely data
- Understand how changes impact IT and business
- Resolve non-standard technologies that create business risks

Enhance Business Agility

- Enhance information relevancy for business decision makers
- Enable architects, planners and executives to work together using their tools of choice
- Improve time to market for new products and services
- Reduce planning time for IT initiatives
- Accelerate business transformation

Trouw Transformation Platform Benefits	Year 1		Year 2
	Cost Avoidance	Productivity Gain	Factor
Yes Improve automation & collaboration	\$526,625		100%
Yes Improve data quality	\$617,750		100%
Yes Reduce time to diagnose IT problems		\$187,812	100%
Yes Reduce application downtime due to change impact	\$1,101,064		100%
Yes Reduce IT time spent on DR plans	\$73,404		10%
Yes Reduce downtime associated with out-of-sync DR plans		\$13,320	100%
Yes Reduce IT policy creation & implementation time	\$115,000		20%
Yes Reduce internal IT audit and enforcement time	\$230,000		100%
Yes Avoid a SOX non-compliance penalty	\$25,000		100%
Yes Avoid D&O insurance cost increase due to external audit failure	\$6,250		100%
Impact			
75%	% decrease in IT data collection time due to automation & collaboration		T_PolDecrCollection
35%	% decrease in IT data analysis time due to improved data quality		T_PolDecrAnalysis
60%	% increase in high-value IT data analysis due to improved visibility		T_PolIncrPlatformVisibility
25%	% decrease in time to diagnose IT problems		T_PolDecrDiagnosis
40%	% decrease in failures due to change impact		T_PolDecrAppImpactFailures
60%	% decrease in IT time spent on DR plans		T_PolDecrDRPTime
30%	% decrease in downtime caused by out-of-sync DR plans		T_PolDecrDRPDownTime
25%	% decrease in IT policy definition and implementation time		T_PolDecrPolicy
25%	% decrease in internal IT audit and enforcement time		T_PolDecrAudit
25%	% of SOX compliance attribution		T_PolSOXAttribution

TEI™ compliance statement.

Trouw Technologies commissioned Forrester to review this ROI model in July 2008 using its proprietary Total Economic Impact™ methodology. Forrester deems that this ROI model conforms to the TEI fundamentals and principles of a sound business case. The intent is for Troux Technologies to guide prospects through the questionnaire to solicit inputs specific to your business and technology environment. Troux Technologies is not permitted to change the calculations or equations. Forrester believes that this analysis is representative of what companies may achieve with Troux Technologies based on the inputs provided and any assumptions made. Forrester does not endorse Troux Technologies or its offerings.

Sample output from the Forrester™ Certified Troux 8 ROI Model show the benefits and expected impact from Troux Transformation Platform.

learn more at www.troux.com



Accelerating IT and Business Transformation

Americas Headquarters:

Trouw Technologies
 8601 FM 2222, Building 3, Suite 300
 Austin, TX 78730
 USA
 Tel: +1 512 536 6270
 Fax: +1 512 231 8796
 Email: info@troux.com

EMEA Headquarters:

Trouw Technologies, UK
 268 Bath Road
 Slough, SL1 4DX
 UK
 Tel: +44 (0) 1753 725660
 Fax: +44 (0) 1753 725661
 Email: emeasales@troux.com

Germany:

Trouw Technologies GmbH
 Landsbergerstr. 302
 D-80687 München
 Germany
 Tel: +49 89 452 1326 0
 Fax: +49 89 452 1326 29
 Email: emeasales@troux.com